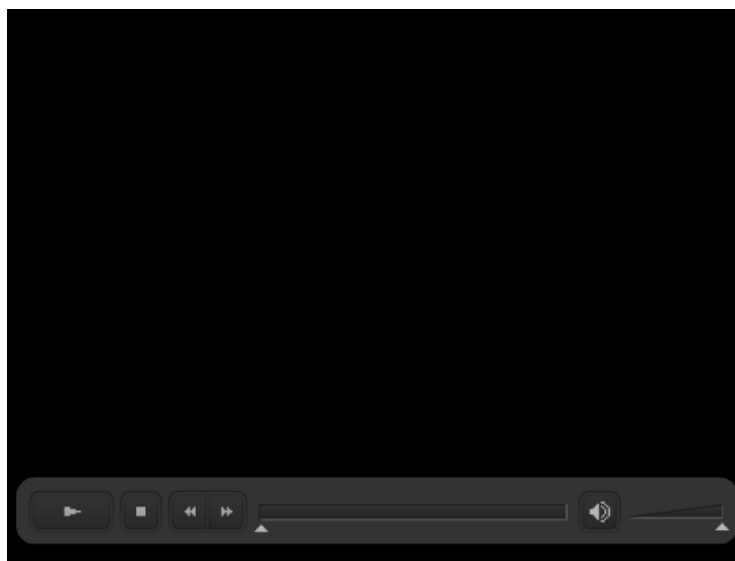


**PHYSICS****NEWTON'S LAWS**NEWTON'S LAWS**1<sup>ST</sup> Law of Motion:****Inertia** -**Implications of the First Law**

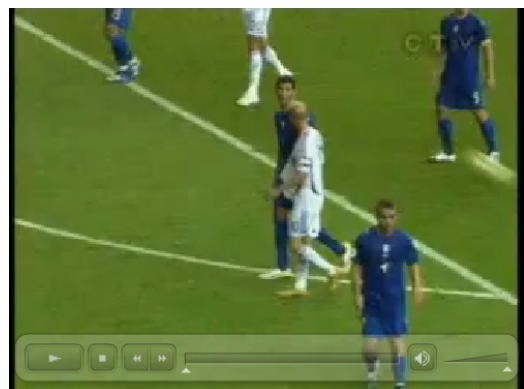
- 1.
- 2.
- 3.
- 4.



PHYSICS

NEWTON'S LAWS

2<sup>ND</sup> Law of Motion:



Implications of the Second Law

- 1.
- 2.

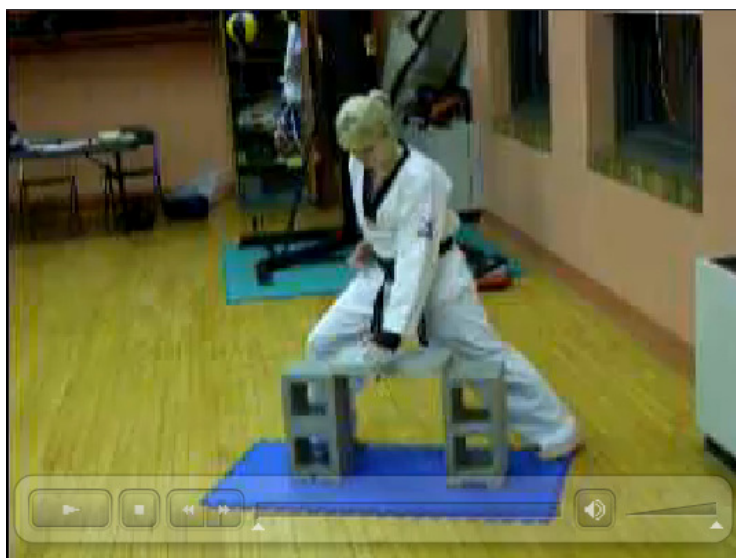
*Therefore ...*



**PHYSICS**

**NEWTON'S LAWS**

3<sup>RD</sup> Law of Motion:



**PHYSICS****NEWTON'S LAWS**

Force examples involving motion:

Ex: A 15 kg crate is pulled along the floor with an applied force of 100 N. The force of friction is 25 N. If the force is applied for 5 s:

a) **What is the acceleration?**

b) **what speed does the object reach?**

c) **How far does it go in the 5 seconds?**

d) **How long does it take for the crate to stop once the applied force is removed?**